

## USE CASE



## Empowering Educational Institutions with **Advanced Security Solutions**

Weatherford Independent School District in Texas has taken a bold step toward reimagining campus safety by deploying the CampusSecure+ platform across all 11 of its campuses.

Serving over 8,000 students, faculty, administrators, and third-party personnel, this deployment has fundamentally transformed the district's ability to monitor, communicate, and respond to safety challenges in real time.

## Invest in the Future of School Safety

CAMPUS Secure+ is more than a security tool—it's a comprehensive safety solution built to protect what matters most: your students and staff. By integrating location intelligence, incident response, and secure communication, your institution can confidently create a responsive, compliant, and a secure learning environment.

## Key Features

### Unified Approach

Unlike traditional solutions that treat physical and IT security separately, our platform delivers a cohesive, single-pane-of-glass view, enhancing overall situational awareness.

### Real-Time Response

The integration of BLE-based tracking, geofencing, and 24/7 IT monitoring ensures that both on-campus emergencies and cyber threats are detected and addressed in real time.

### Scalable & Cost Effective

By consolidating multiple security functions into one solution, institutions can reduce capital expenditures and operating costs while optimizing resource allocation.

### Technology Agnostic

Our solution is designed for seamless integration with existing campus systems—whether legacy or modern—using open standards and flexible APIs, ensuring a future-proof investment.

### Advanced Analytics & Decision Support:

Automated risk scoring, incident categorization, and real-time analytics empower administrators to make data-driven decisions, leading to more effective resource deployment and faster incident resolution.

### Enhanced Compliance & Audibility

Built-in compliance reporting and secure data handling provide the necessary audit trails to satisfy regulatory requirements and build trust among stakeholders.

## Facing the Threat Landscape: Actionable Security Solutions

### Challenge 1: Limited Security Personnel & Resource Constraints

#### Problem:

Many school districts face budgetary and staffing limitations, making it challenging to cover extensive campuses effectively.

#### Our Solution:

- Automated monitoring through +LOCATE reduces the need for manual oversight.
- Intelligent incident reporting and resource allocation ensure that security personnel focus on high-priority areas.
- Integrated IT monitoring further reduces the burden on in-house staff, allowing existing teams to operate more efficiently.

### Challenge 2: Fragmented Physical Security Systems

#### Problem:

Disparate security systems often result in delayed responses and difficulty in tracking individuals during emergencies.

#### Our Solution:

- +LOCATE offers continuous, real-time tracking using BLE-enabled badges and geofencing.
- Integrated mobile incident reporting and emergency messaging streamline communication during crises.
- Automated lockdown procedures ensure rapid containment of threats.

### Challenge 3: Rising Cyber Threats & Inadequate IT Infrastructure

#### Problem:

Outdated IT systems and a lack of cybersecurity expertise expose schools to cyberattacks that can disrupt operations and compromise sensitive data.

#### Our Solution:

- MSSP services provide round-the-clock network monitoring, advanced SIEM, and proactive vulnerability management.
- Robust endpoint protection and data encryption protect against cyber intrusions.
- A unified dashboard that correlates physical security events with IT alerts enhances overall threat detection and response.

### Challenge 4: Data Integrity & Regulatory Compliance

#### Problem:

Ensuring the protection of student and staff data while meeting strict regulatory standards is complex and resource-intensive.

#### Our Solution:

- Secure, encrypted data storage and comprehensive audit logs simplify compliance reporting.
- Automated incident logs and detailed analytics ensure that all security events are traceable and compliant with FERPA, HIPAA, and other standards.
- Biometric and driver's license scanning support accurate visitor and personnel registration.

## Our Benefits

Our integrated solution delivers a unique, innovative, and cost-effective approach to campus security by merging physical and IT security capabilities. Key benefits include:

### Unified Security Management:

A single platform provides a holistic view of campus safety, improving both physical and digital security coordination.

### Enhanced Operational Efficiency:

Automation and real-time analytics optimize resource allocation, reduce incident response times, and lower overall costs.

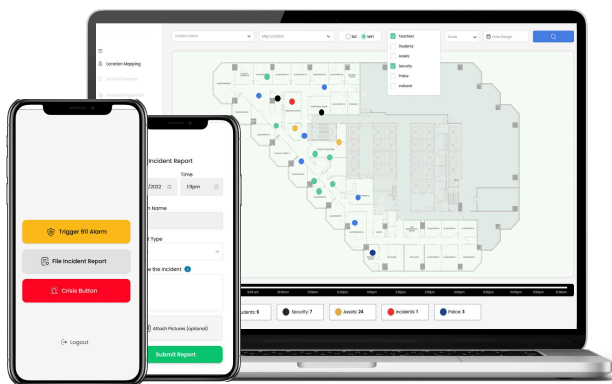
### Robust Defense Against Threats:

Comprehensive IT security measures and advanced physical security technologies work together to protect sensitive data, ensure compliance, and safeguard campus communities.

### Future-Proof & Technology Agnostic:

Our flexible, open-standard solution integrates seamlessly with existing systems, making it adaptable to future technology advancements and evolving security challenges.

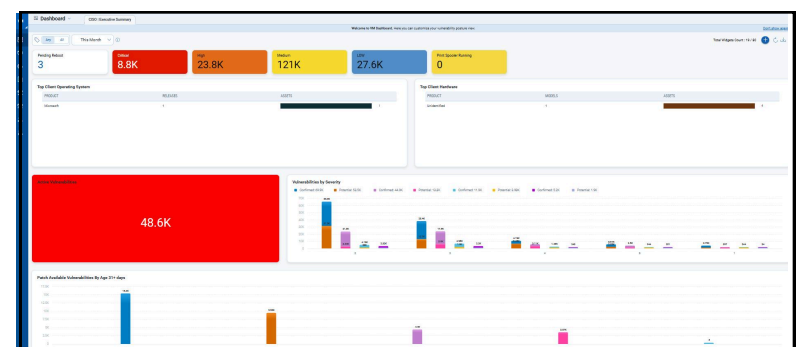
## +LOCATE



+LOCATE is a cutting-edge location analytics solution that consolidates data from access controls, security cameras, and mobile devices into a single, intuitive interface.

By delivering live, precise location data, it enables schools and universities to monitor campus activity in real time, quickly identify potential threats, and respond effectively to emergencies.

## +MSSP



Our Managed Security Services (+MSSP) provide 24/7 monitoring and rapid incident response to minimize cyber threats and reduce downtime.

We offer comprehensive endpoint protection, including patch management and vulnerability scanning, to proactively defend against vulnerabilities. Encrypted backups and data loss prevention measures ensure compliance with industry regulations such as FERPA and HIPAA.